



# Overview of Options - Method

A data map was built of the locality to help inform how best to segment the area, based on PCH and other criteria, to meet the commissioning intentions of the CCG.

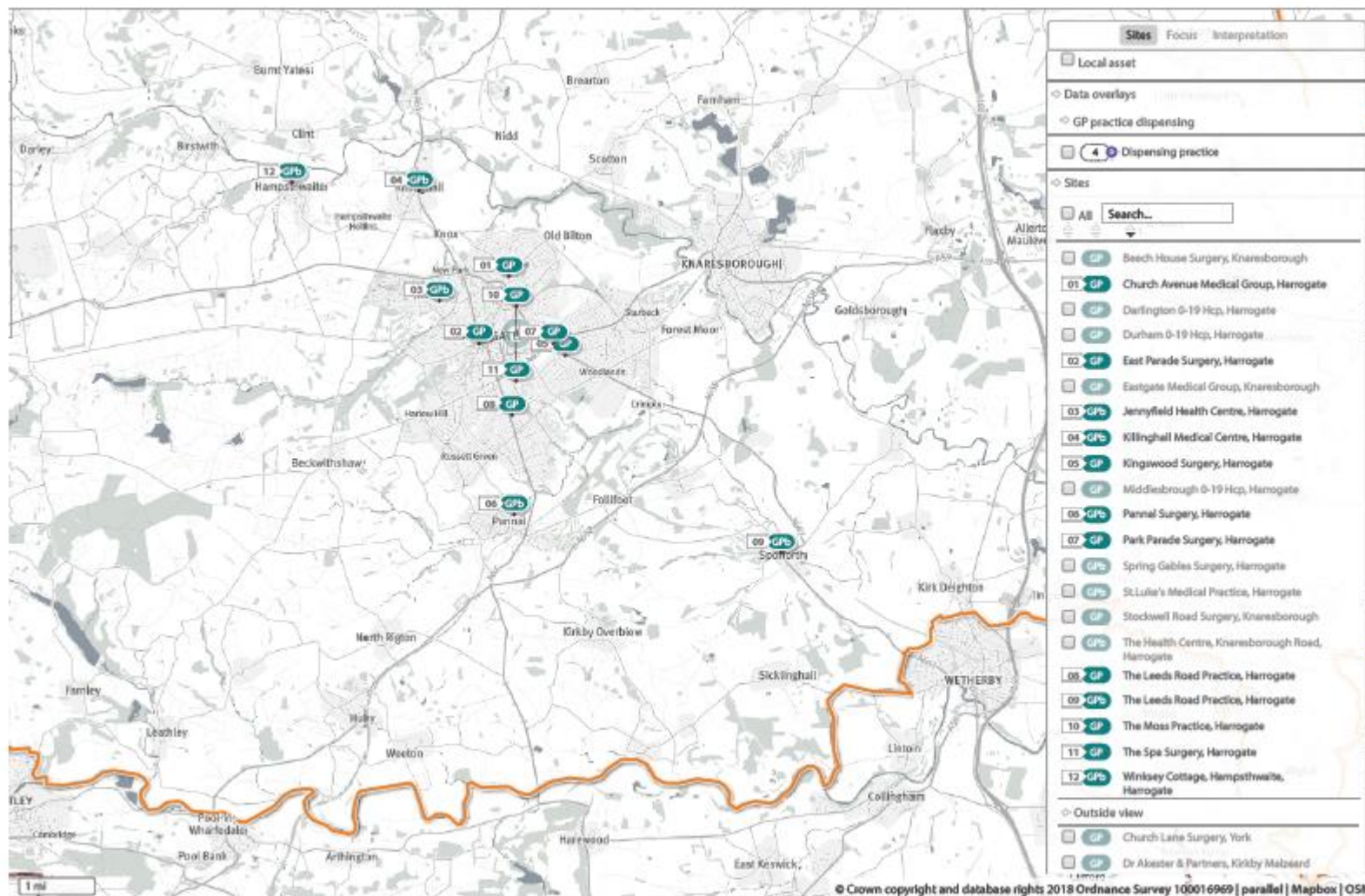
The data map is interactive and shows:

- Team / practice locations and boundaries
- Travel time by car/public transport for patients and staff
- Public Health data by output area
- QoF data
- Registered patients
- Population data

Through the data, a number of segmentation/hub options were identified. A sub-group of the Board was formed with representation across partners to review the data and options and come up with some recommendations.



# Harrogate Town Hub



Map shows geographical area

GP Practices included:

- Kingswood Surgery
- East Parade Surgery
- The Spa Surgery
- Church Avenue Medical Group
- Park Parade Surgery
- The Leeds Road Practice
- Dr Moss & Partners

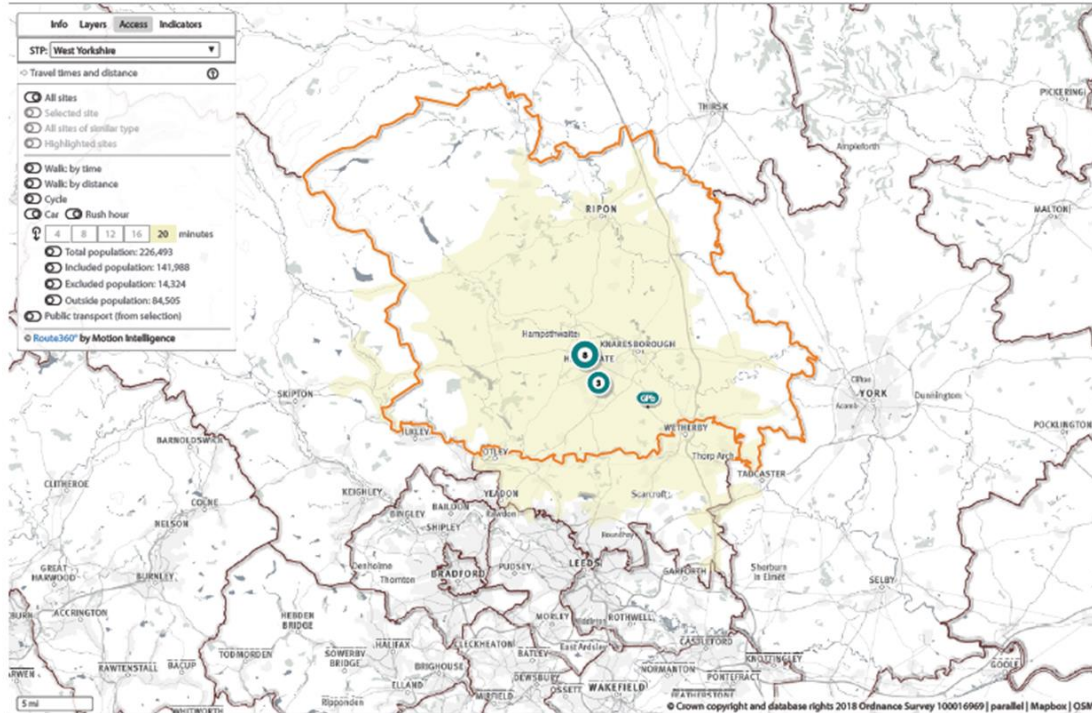
Hub is larger than the PCH recommended size with 80,726 registered patients.

Difficult to find a meaningful way to segment the Harrogate town that isn't an artificial divide.

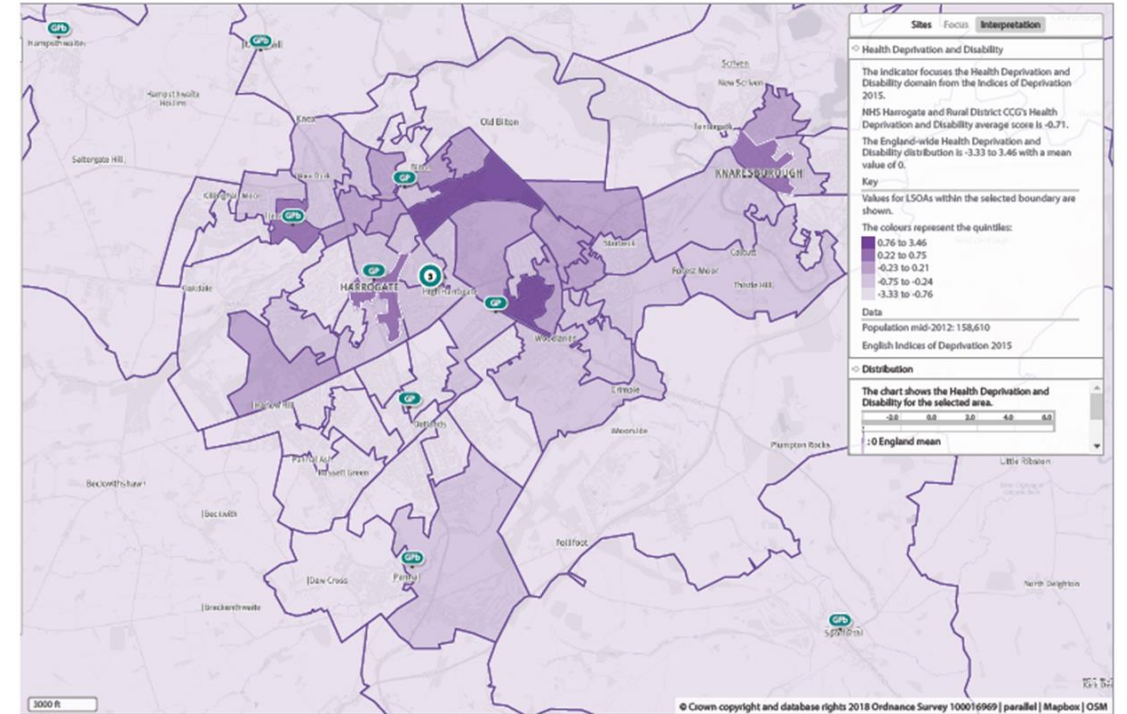


# Harrogate Town Hub

## Accessibility by transport within 20 mins



## Health Deprivation & Disability Indices





# Harrogate Town Hub

## Benefits

- Avoids artificial divide of Harrogate town centre given the overlap across practices - continuity of service to patients
- Benefit of single point of access for patient due to review of the referral pathway.
- Due to the catchment area having a higher population size this would lead to easier management of capacity across teams and increased collaboration due to proximity of practices and overlap of registered patients
- Potential for co-location and potential to add value through more collaborative working practices.
- Good fit with combined HDFT Harrogate North and South teams.

## Costs

- Possible increase in travel time if one central hub not identified
- Possible costs of multiple hubs

## Risks

- Greatly exceeds target PCH registered population of 30-50,000 at 80,726 (NB. PCH have confirmed this is possible)
- Lessons learned regarding pros and cons of higher population size to be reviewed from PCH case studies
- Difficulty in establishing estates for central hub,
- Due to ongoing review of NYCC staff boundaries potential for the boundaries not to be in alignment for Harrogate.